

# APOT Report - August 2022

Alameda County EMS

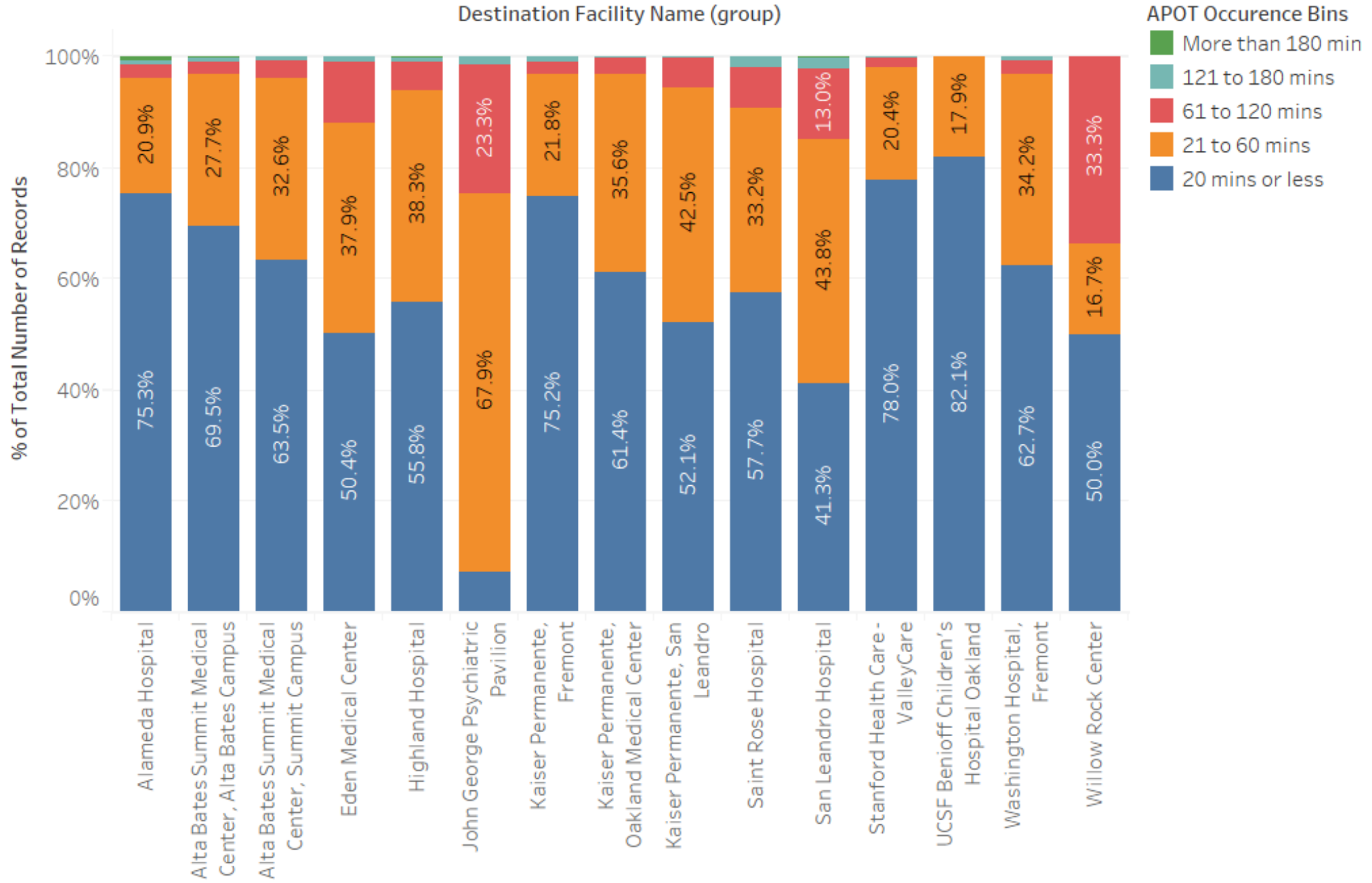
## Summary

Destination Facility Name (group)	Avg. Transfer of Care	Percentile (90) of Transfer of ..	APOD>60m..	APOD % of N	
Alameda Hospital	18.9	31.5	12	3.8%	316
Alta Bates Summit Medic..	21.3	35.0	16	2.8%	564
Alta Bates Summit Medic..	21.6	44.0	49	3.9%	1,256
Eden Medical Center	28.7	64.0	108	11.7%	926
Highland Hospital	24.9	49.0	69	5.8%	1,180
John George Psychiatric P..	48.9	80.0	53	24.7%	215
Kaiser Permanente, Frem..	19.3	33.0	13	3.0%	432
Kaiser Permanente, Oakla..	21.6	41.9	23	3.0%	762
Kaiser Permanente, San L..	24.9	49.0	41	5.4%	760
Saint Rose Hospital	27.5	56.0	41	9.1%	452
San Leandro Hospital	34.2	72.0	70	14.9%	470
Stanford Health Care - Val..	16.4	31.9	10	1.6%	622
UCSF Benioff Children's H..	14.4	28.0	0	0.0%	112
Washington Hospital, Fre..	21.3	36.5	30	3.1%	976
Willow Rock Center	34.2	69.5	2	33.3%	6

# APOT Bins

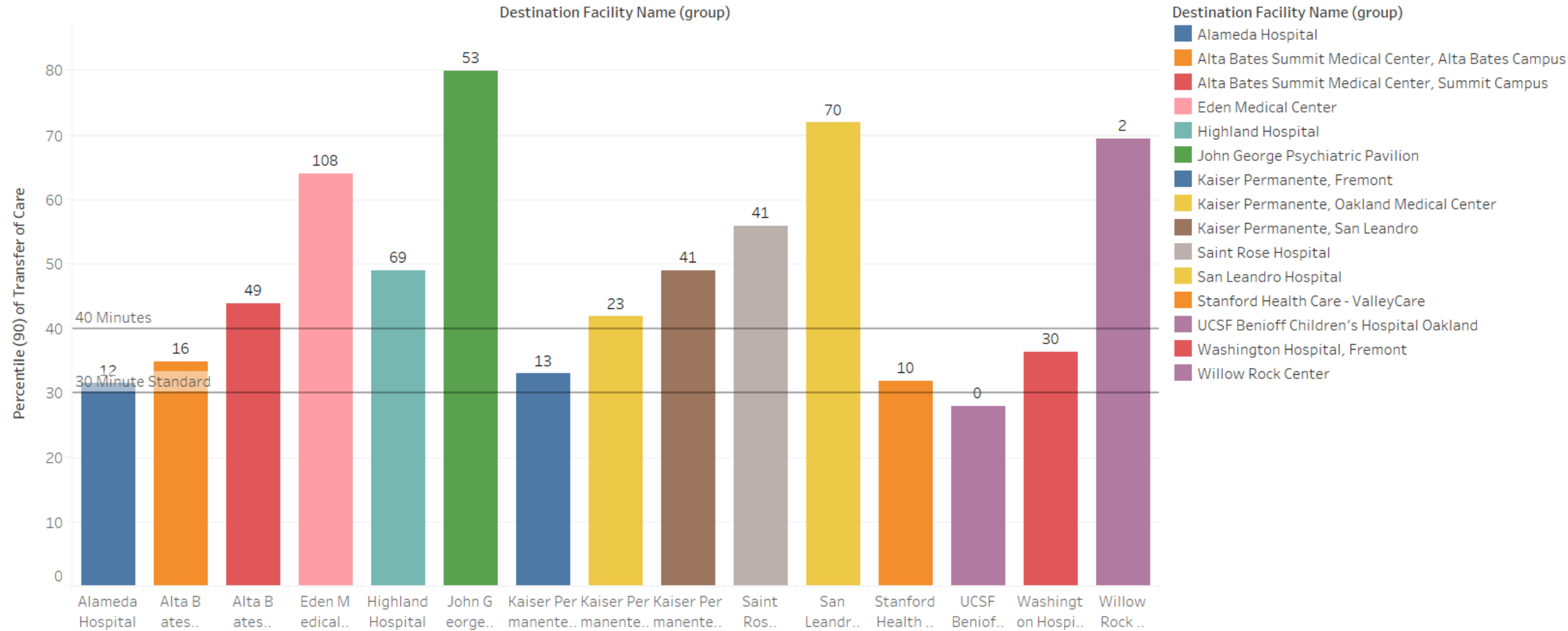
Destination Facility Name..	APOT Occurrence Bins					Grand T..
	20 mins..	21 to 6..	61 to 1..	121 to ..	More th..	
Alameda Hospital	238 75.32%	66 20.89%	8 2.53%	2 0.63%	2 0.63%	316 100.00%
Alta Bates Summit Medical Center, Alta Bates Campus	392 69.50%	156 27.66%	11 1.95%	4 0.71%	1 0.18%	564 100.00%
Alta Bates Summit Medical Center, Summit Campus	798 63.54%	409 32.56%	44 3.50%	5 0.40%		1,256 100.00%
Eden Medical Center	467 50.43%	351 37.90%	101 10.91%	7 0.76%		926 100.00%
Highland Hospital	659 55.85%	452 38.31%	59 5.00%	8 0.68%	2 0.17%	1,180 100.00%
John George Psychiatric Pavilion	16 7.44%	146 67.91%	50 23.26%	3 1.40%		215 100.00%
Kaiser Permanente, Fremont	325 75.23%	94 21.76%	9 2.08%	4 0.93%		432 100.00%
Kaiser Permanente, Oakland Medical Center	468 61.42%	271 35.56%	22 2.89%	1 0.13%		762 100.00%
Kaiser Permanente, San Leandro	396 52.11%	323 42.50%	40 5.26%	1 0.13%		760 100.00%
Saint Rose Hospital	261 57.74%	150 33.19%	33 7.30%	8 1.77%		452 100.00%
San Leandro Hospital	194 41.28%	206 43.83%	61 12.98%	8 1.70%	1 0.21%	470 100.00%
Stanford Health Care - ValleyCare	485 77.97%	127 20.42%	9 1.45%	1 0.16%		622 100.00%
UCSF Benioff Children's Hospital Oakland	92 82.14%	20 17.86%				112 100.00%
Washington Hospital, Fremont	612 62.70%	334 34.22%	24 2.46%	6 0.61%		976 100.00%
Willow Rock Center	3 50.00%	1 16.67%	2 33.33%			6 100.00%
Grand Total	5,406 59.74%	3,106 34.32%	473 5.23%	58 0.64%	6 0.07%	9,049 100.00%

# APOT Bins Graph

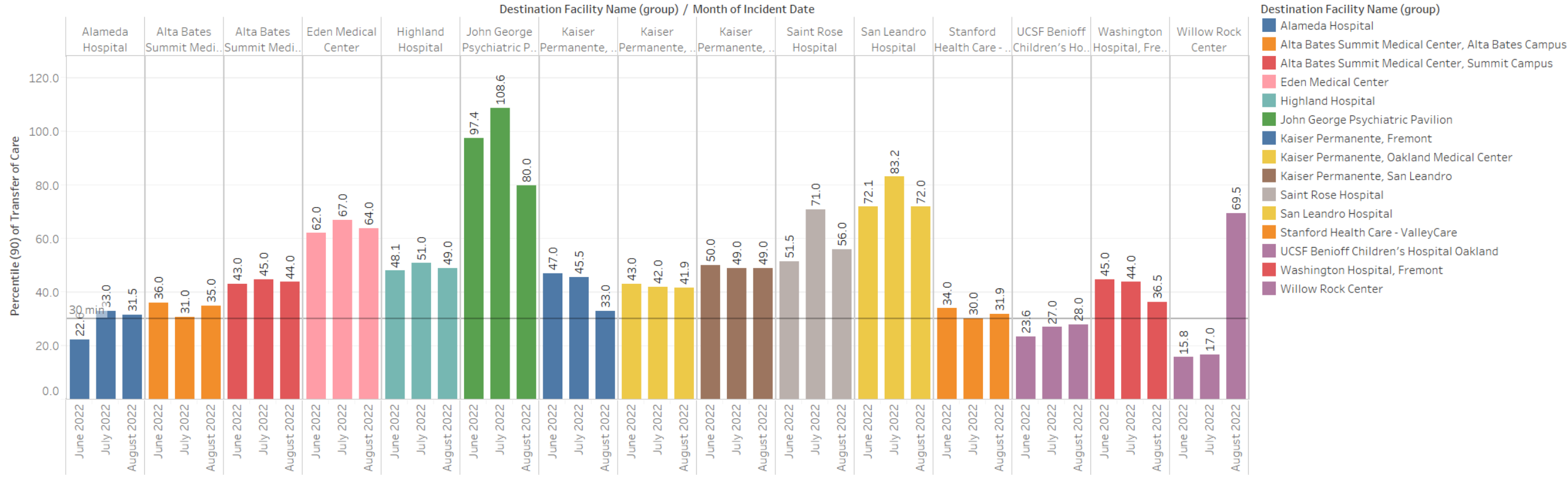


# Current Month 90% APOT

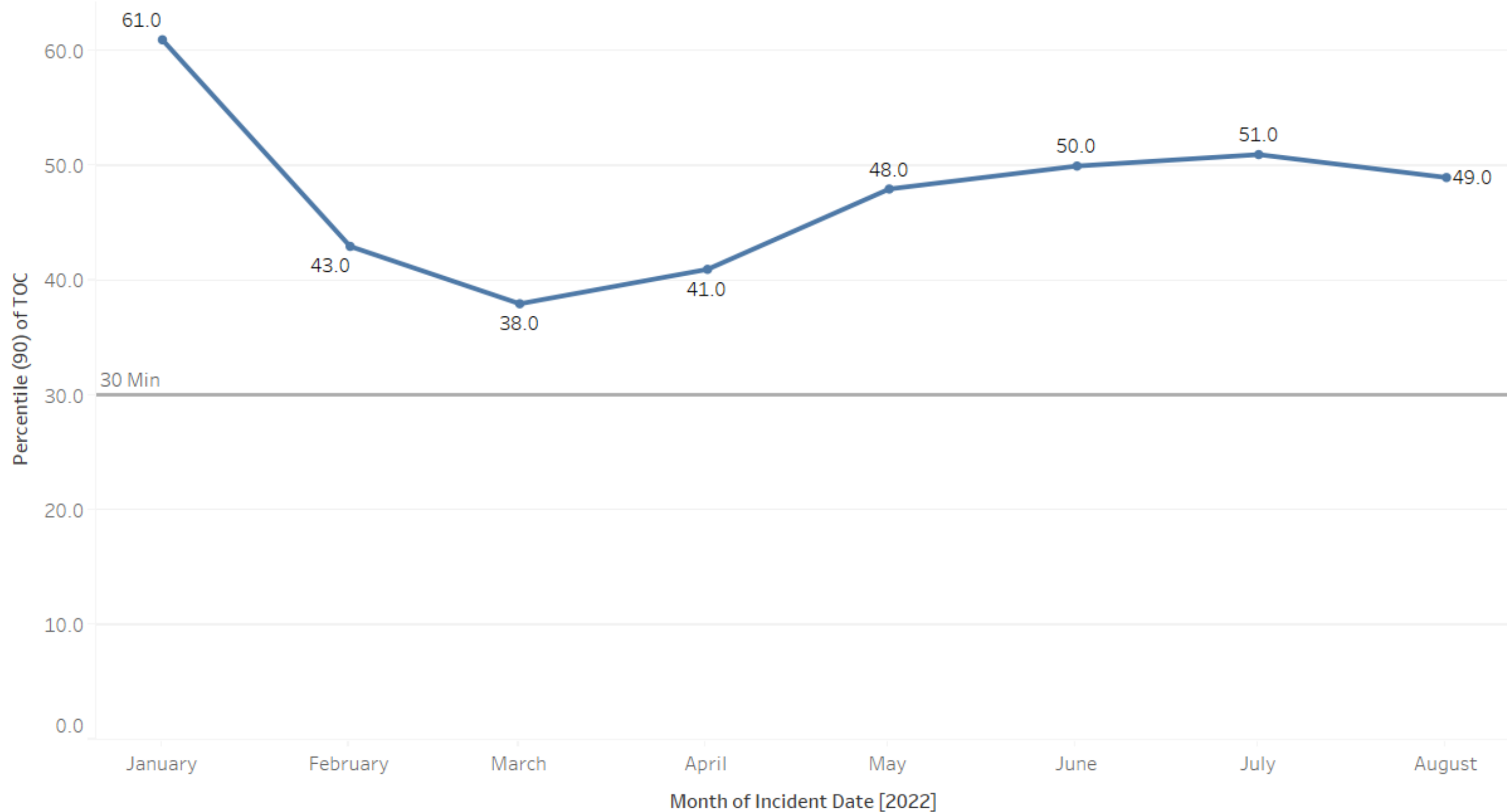
Data label reflects number of APOD >60min



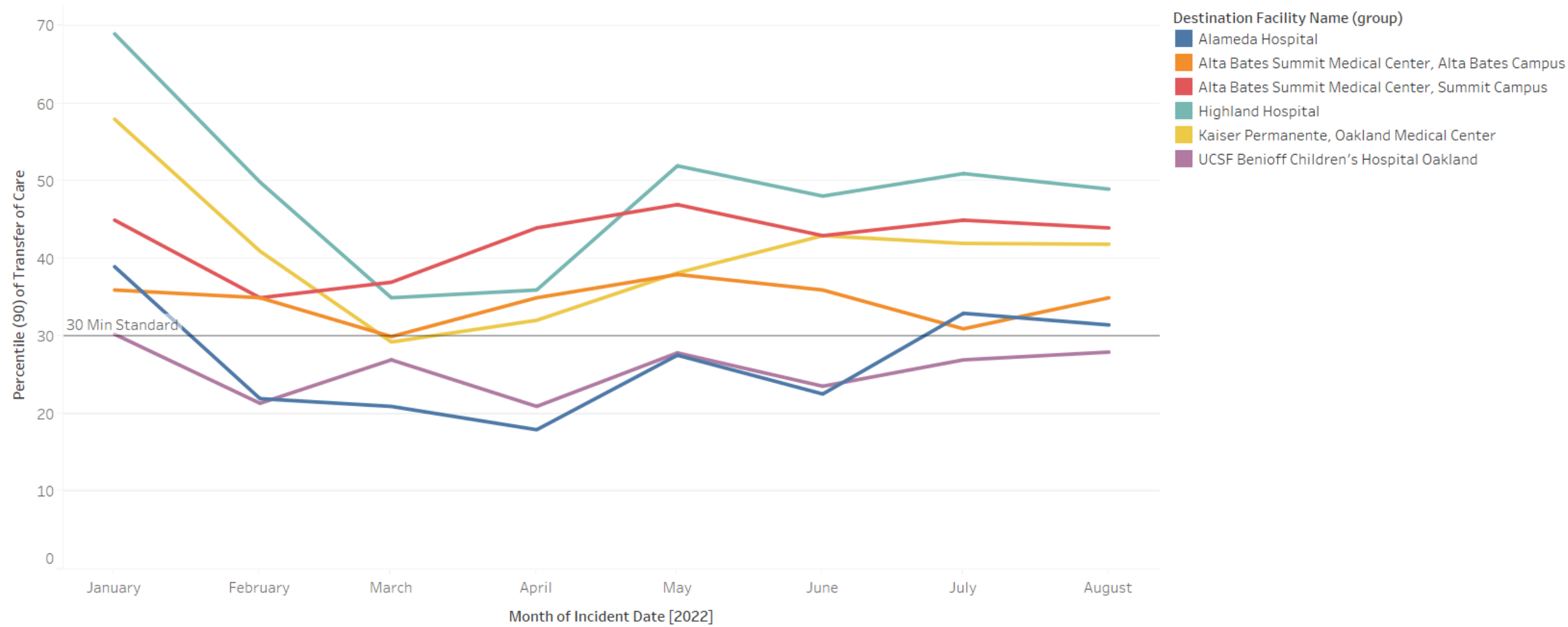
Prev Month 90% APOT



# All Hospital 90% APOT

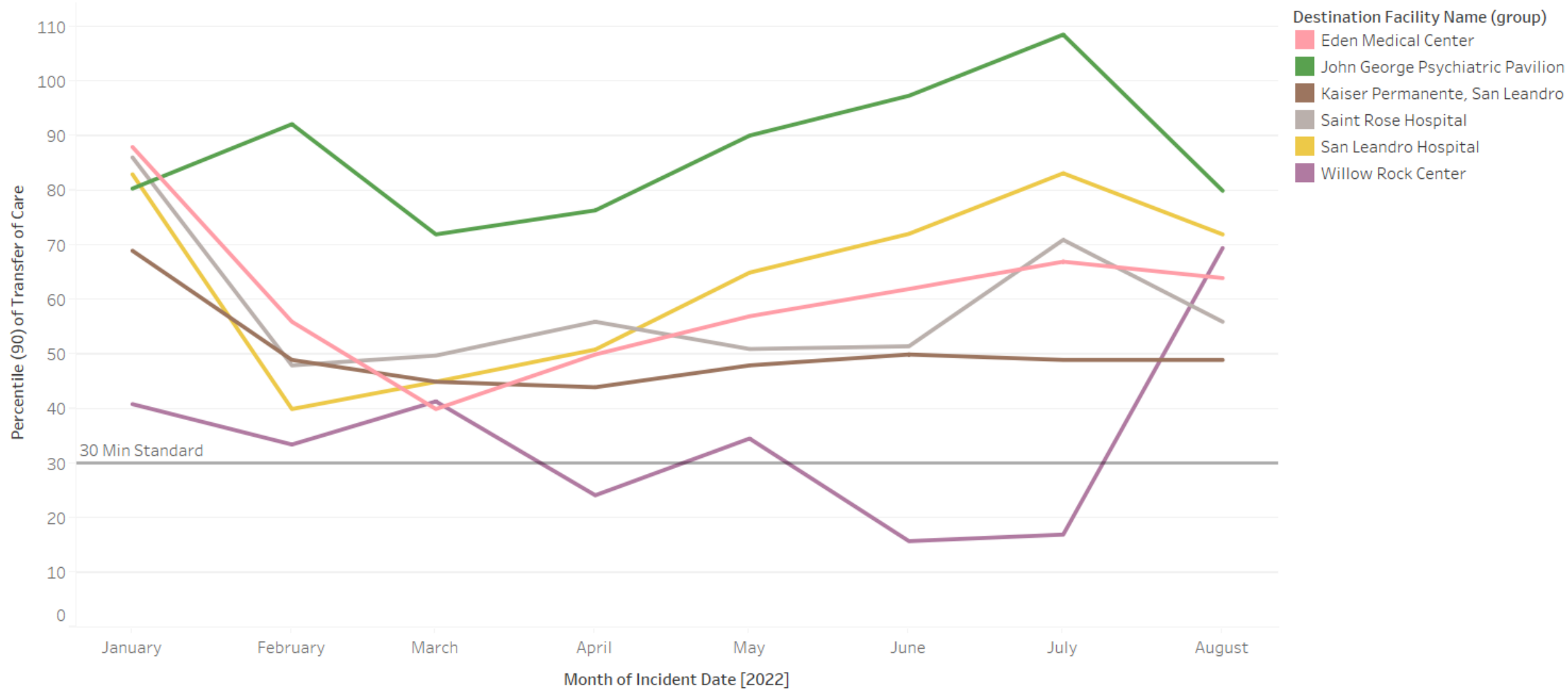


# North 90% APOT

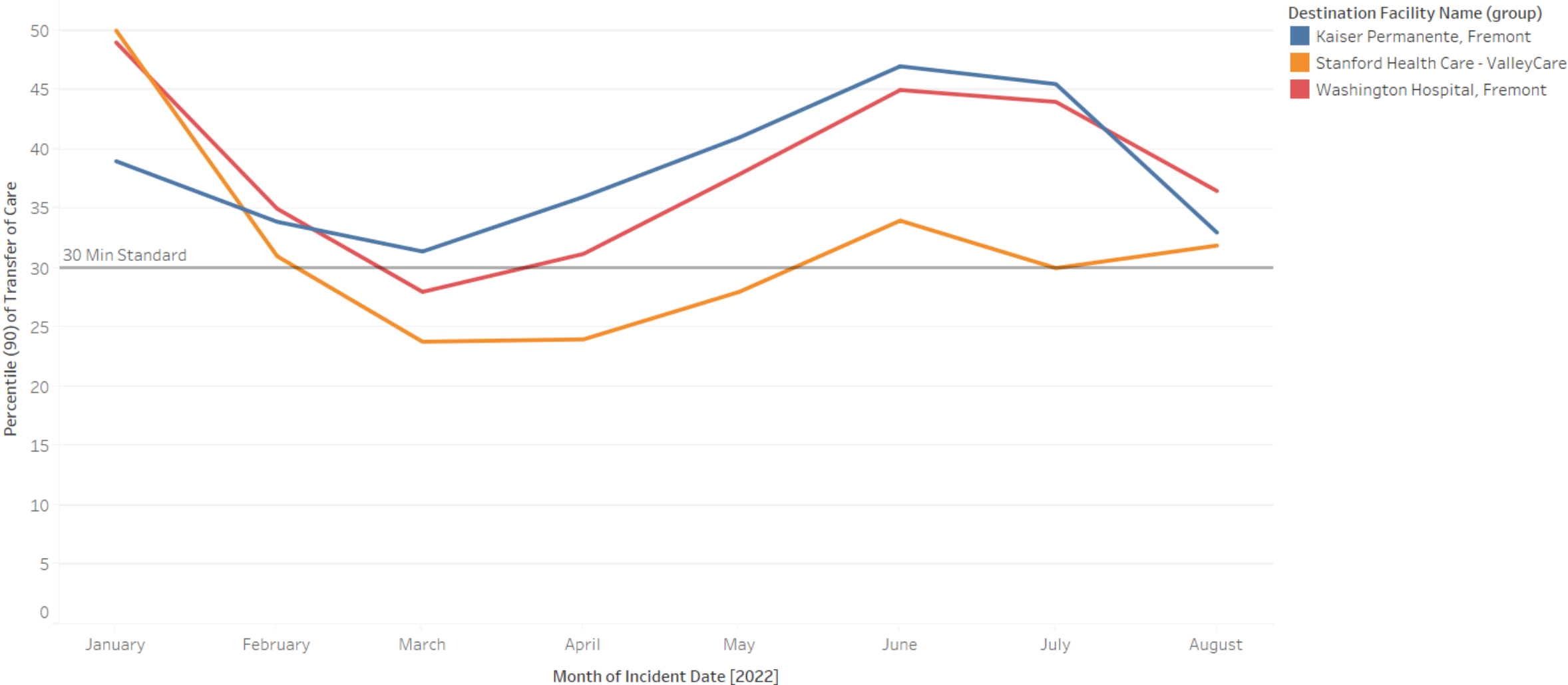




## Mid 90% APOT



# South and East 90% APOT



# APOT Bins Graph by Agency

